



BEREA COLLEGE FORESTRY OUTREACH CENTER at the Pinnacles

2047 Big Hill Rd. Berea, KY 40403

May 2022 Friends of the Forest Newsletter



What's the Buzz About Pollinators?



The FOC is OPEN
Our hours are
Tuesday-Saturday
10-4, Sunday 12-4.

Land Acknowledgement:
Osiyo. Hatito. (Hello)

The lands which comprise the Berea College Forest are the traditional homelands of Shawnee and Cherokee peoples who hold these mountains in care and tradition. Thank you to Tiffany Pyette for this Land Acknowledgment Statement.

Love them or not, bees are one of the most important pollinators on the planet. They, along with other critters like butterflies, moths, and flies, are what sustain plant populations that are essential to us and other animals. Grow Appalachia has been working on collecting local wild swarms of honeybees that are resistant to varroa mites without need for human intervention.



Two of Grow Appalachia's bee hives by the forest

These parasitic mites are affecting bee populations across the country when bees and other insects are facing hardships like pesticides and habitat destruction. Giving these swarms a safe place to live and reproduce encourages the spread of these favorable genetics against the mites. What you can do to help:



- If you see a swarm of honeybees, do not disturb them--call a beekeeper or your local Extension office
- Plant native, pollinator-friendly flowers
- Avoid using harmful pesticides and herbicides, *leave the weeds*
- Don't mow until late spring to provide early nectar sources for bees

Learn about the pollinators that come out at night, along with other animals that cry, howl, or hoot during a near-full moon on our

FRIDAY THE 13TH CREEPY CRITTER WALK 8:00 PM AT THE PINNACLES

This will be a family-friendly walk in the woods, about a mile in length. Please bring your own flashlights or headlamps. You never know what we might find in the dark of the woods!



May Events:

* see newsletter for info
All events at the FOC/Pinnacles
unless otherwise noted



- Pinnacles group hikes Saturdays at 10 am. Meet at the FOC. All welcome!
- The City Nature Challenge Bioblitz: May 1st, 3:00 pm. Meet at skate park. The CNC continues through May 2nd. See more info on our Facebook!
- *Star Party! May 5th, 7:30 pm
- Kids Discovery Walk: May 13th, 2:00 pm
- *Friday the 13th Creepy Critter Walk: May 13th, 8:00 pm
- Outdoor Free Play with Winterberry Studio: May 21st, 2:00-4:00 pm
- Weekly Tours (Wednesdays, 2:30 pm) of the Center available through the Berea College Visitor Center & Shoppe. Perfect for visiting friends or family members!



Berea College Forestry Outreach Center



@bereacollegefoc



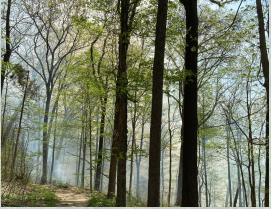
Citizen Science Project:
Biodiversity of the Berea College Forest



Seek app by
iNaturalist, great I.D. tool
for kids and families

<https://forestryoutreach.berea.edu/>

Controlled Burn on 4/27



This April, the Forestry Department along with the Kentucky Division of Forestry conducted a prescribed burn on 20 acres of forest at the Pinnacles. These burns aim to clear the understory of invasive species and reduce overcrowding, enabling the established, native plants to grow in a healthier way. These burns are always well-planned and controlled events. A big thank you to the KDF!

Star Parties Return!



Break out your telescopes or binoculars and come to the Pinnacles to learn about the night sky. At each party, Jeff Hutton loves to share about a different aspect of astronomy. This month's is on May 5th at 7:30 pm. Jeff will give a short presentation followed by stargazing through his telescopes. Stay tuned for Sun Day in June and other future astronomical events!

Labor Student Projects



Jasmine at the greeter's desk



Congrats to our spring graduates, Lucas (left) and Blake (right)



Elijah with his mushroom colonies

This year, we had an amazing range of projects developed by our labor students. Jasmine Reitze ('23) worked on translating materials, including our display panels, into Spanish to reach a wider audience. Lucas Collett ('22) mentored a student from Berea Community School's work-transition program. Blake Day ('22) maintained our website and trained Kya Norman ('25) on its inner-workings for when she takes over next semester. Kya researched natural dyes and foraged fallen lichen to make dye of her own. Finally, Elijah Hicks ('23) inoculated different species of mushrooms to try and colonize and break down waste materials, such as masks. We love having such creative and dedicated students!



Kya with her sustainably sourced lichen dye



May Moon Phases



First Quarter: May 9th



Full Moon: May 16th



Lasts Quarter: May 22nd



New Moon: May 30th

Learn more about the wonders of the night sky with Jeff Hutton's monthly *Skies Over the Pinnacles* articles on our website: forestryoutreach.berea.edu

Kids Discovery Walk

May 13th, 2:00 pm at the Pinnacles

Let's go on an adventure to see what plants and animals we can find! Flip over logs, visit a pond, All ages welcome!

8:00 pm: Join us for our family-friendly night walk (see info on page 1)

Outdoor Free Play w/ Winterberry Studio

May 21st, 2:00-4:00 pm at the Pinnacles

All ages welcome!