



BEREA COLLEGE FORESTRY OUTREACH CENTER

September 2021 Friends of the Forest Newsletter



We're Back!

The Bera College Forestry Outreach Center is OPEN
Our hours are
Tuesday-Saturday
10-4, Sunday 12-4.



Land Acknowledgement:

Osiyo. Hatito. (Hello)

The lands which comprise the Bera College Forest are the traditional homelands of Shawnee and Cherokee peoples who hold these mountains in care and tradition. Thank you to Tiffany Pyette for this Land Acknowledgment Statement.

September Events:



- Pinnacles group hikes Saturdays at 1 pm. Meet at the FOC. All welcome!
- Brushy Fork Friday hikes for campus community. Meet at 4:15 pm at grassy patio behind Alumni.
- September 11th, 2-4 pm Outdoor Free Play w/ Winterberry Studio. Meet at amphitheater. All welcome!
- September 15th Star Party with Jeff Hutton at 7 pm at FOC classroom. All welcome!
- September 25th, 3-7 pm Auditory Art Experience. Opening reception at amphitheater. More details on page 2.



Bera College Forestry Outreach Center



@bereacollegefoc



Citizen Science Project:
Biodiversity of the Bera College Forest



Seek app by
iNaturalist, great I.D. tool
for kids and families

<https://forestryoutreach.bera.edu/>

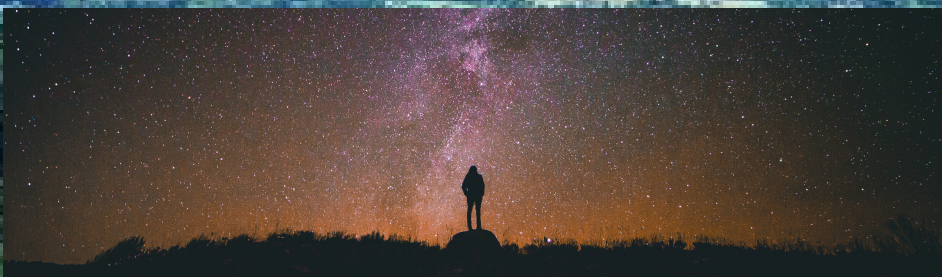
Star Parties Begin Again!

Wednesday September 15th will be the first Star Party we've held at the Center in quite a while! Mask up and join us at 7:00 pm, where Jeff Hutton will share a presentation about the moon. Then if skies are clear, we'll head outside where we'll turn out the lights to view the moon through telescopes. Don't miss it!

Watch for more Star Parties in October and November, when Jeff teams up with students in Professor Tracy Hodge's Astronomy class.
[Oct. 20th, 27th and November 3rd and 10th]

Wednesdays are Sky Nights this fall!

Watch for more information in our October newsletter.



Meet Our Newest Students!

Edie Jo Wakin, a sophomore, is pursuing a major in Biology. She hopes to expand on her fascination with the forest ecosystem and maybe one day have a career with the national park service.



Jasmine Reitze is a junior double majoring in Peace and Social Justice and Environmental Studies. In her free time she loves to hike, kayak and just spend time enjoying the outdoors!



Kya Norman is a first-year student and hopes to major in psychology. She is excited for her first year working at the Forestry Outreach Center and she hopes to see you at her favorite hiking spot, Brushy Fork.



We also welcome back returning students Blake Day, Elijah Hicks and Lucas Collett!

September Skies Over the Forest

New Moon: Sept. 7th
First Quarter: Sept. 13th
Full Moon: Sept. 20th
Last Quarter: Sept. 29th

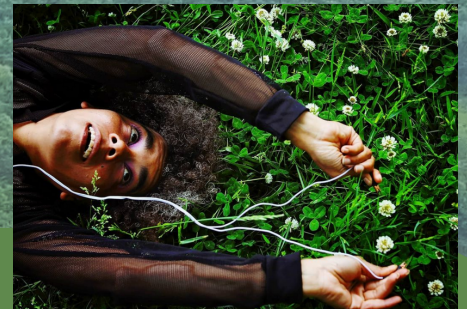
Take a deeper dive into the world of Telescopes with our astronomer, Jeff Hutton, and don't miss out on our regular Star Parties at the Pinnacles!

Check out Jeff Hutton's June Skies article for more information! You'll find it at: <https://forestryoutreach.berea.edu/skies-over-the-pinnacles/>

September Activities

Late September brings a new experience to the Berea College Forest, featuring the work of artist Loretta Maps Bolt.

Loretta works with the electrical impulses created by plants to facilitate their musical expression. You can experience these bio-tunes and meet the artist at the opening reception September 25th from 3:00-7:00 pm at the Pinnacles amphitheater.



Outdoor Free Play!

These days a lot of families and kids are feeling isolated, so in order to create time and space for connection. Winterberry Studios and the Berea College Forestry Outreach Center is teaming up to host monthly Outdoor Free Plays from 2:00-4:00 pm on the second Saturday of the month! This is a safe space for kids of all ages to play and explore. Hope to see you out there!

We'll be working with several Berea College classes this fall, in courses ranging from religion to computer science, and everything in between. As the students who work at the Forestry Outreach Center will tell you, all topics are related to the forest!

Follow the Berea College Forestry Outreach Center and the Berea College Forestry Department's social media pages for information on upcoming activities!

Wado. Niyaawe. (Thank you).

Reach Out!

Questions about the forest? Hiking? The natural world? Feel free check out our website (<https://forestryoutreach.berea.edu/>) or reach out to:

FOC Director: wendy_warren@bera.edu

FOC Naturalist: john_abrams@bera.edu