

## BEREA COLLEGE FORESTRY OUTREACH CENTER

May 2021 Friends of the Forest Newsletter

### Soaring into May!

Here are a few of our favorite Kentucky birds! Learn more by joining us for bird walks in the lower part of the forest.



#### Ruby-Throated Hummingbird

These birds are back in Kentucky after flying non-stop over the Gulf of Mexico, which takes 18-22 hours.



#### Kentucky Warbler

Watch closely and you'll see that Kentucky Warblers eat mostly insects including moths, bugs, ants, grasshoppers, beetles, caterpillars, and spiders, supplemented with a few berries.

### Prescribed Burn



On April 20th, the Berea College Foresters used a controlled burn as part of their Forest Management Plan. Prescribed fire is a way to restore the ecosystem and maintain fire-adapted habitats, reducing dead debris, increasing White Oak regeneration and habitat for roughed grouse and enhancing Shortleaf Pine habitat.

#### Land Acknowledgement:

*Osiyo. Hatito. (Hello)*

The lands which comprise the Berea College Forest are the traditional homelands of Shawnee and Cherokee peoples who hold these mountains in care and tradition. Thank you to Tiffany Pyette for this Land Acknowledgement Statement.

## May Events:



#### On-Campus Community:

- TGIF Hikes: Every Friday at 5:15pm

#### Local/In-Town Community:

- Pinnacles Hikes: Saturdays - 10am
- Bird Walks: May 8th & 29th 8am.

\*details on page 2



The Pinnacles, Brushy Fork, and Anglin Falls trails are OPEN. The Forestry Outreach Center and restrooms are CLOSED.



Berea College Forestry Outreach Center



@bereacollegefoc



Citizen Science Project:  
Biodiversity of the Berea College Forest



Seek app by  
iNaturalist, great I.D. tool  
for kids and families

<https://forestryoutreach.berea.edu/>



# What's Happening at the Pinnacles?

We celebrated Earth Day all week with pictures from the community and our staff highlighting the forest, water, creatures, and more! Here's one of our favorite pictures:



On April 24th Center Naturalist John Abrams led two Bird Walks co-hosted by the Kentucky Ornithological Society.

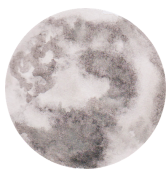
We also hosted several wildflower walks in April where we were able to see a variety of flowers blooming, including the Jack-in-the-pulpit pictured here



## May Skies Over the Forest

Mercury

About 8:30 PM



Last Quarter: May 3rd  
New Moon: May 11th  
First Quarter: May 19th  
Full Moon: May 26th



On May 28th around 8:30 pm, you'll be able to catch a rare glimpse of Mercury!

Check out Jeff Hutton's May Skies article for more information! You'll find it at:

<https://forestryoutreach.berea.edu/skies-over-the-pinnacles/>

## May Activities

### On-Campus:

- **TGIF Hikes:** Join us every Friday (weather permitting) for a walk through Brushy Fork starting at 5:15pm. We will meet at the grassy area behind the dining hall.

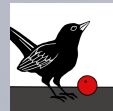
### Public/Community:

- **Bird Walks:** with our Naturalist John Abrams May 8th and 29th, 10am at the Pinnacles.
- **Community Hikes:** Saturdays, 10am at the Pinnacles, starting May 8th

## Winterberry Studio Nature Workshop

Free to all on May 8th  
2-4pm at the Berea Pinnacles!

Join Winterberry Studio and go for a nature walk collecting materials and then get to work spelling out names, creating your favorite animal, and doing some mixed media creations.



Reserve your spot today!

<http://docs.google.com/.../1FAIpQLSchOtjFBCOZX24.../viewform>

Follow the Berea College Forestry Outreach Center and the Berea College Forestry Department's social media pages for information throughout April!

*Wado. Niyaawe. (Thank you).*

## Reach Out!

Questions about the forest? Hiking? The natural world? Feel free check out our website (<https://forestryoutreach.berea.edu/>) or reach out to:

FOC Director: [wendy\\_warren@bera.edu](mailto:wendy_warren@bera.edu)

FOC Naturalist: [john\\_abrams@bera.edu](mailto:john_abrams@bera.edu)